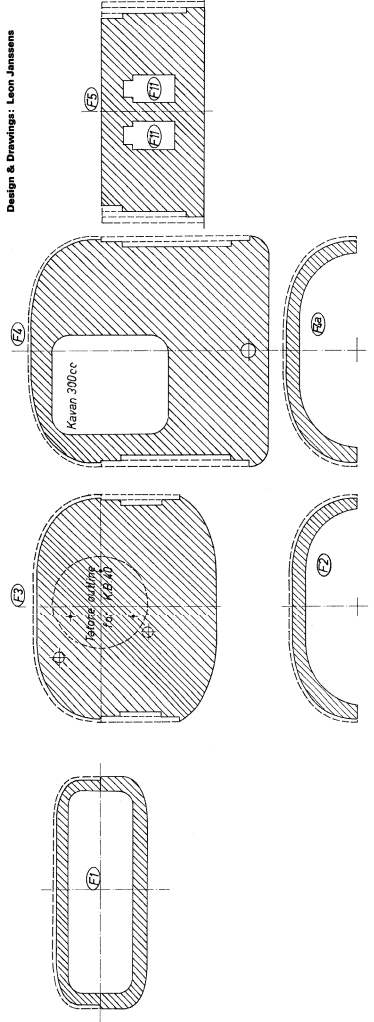
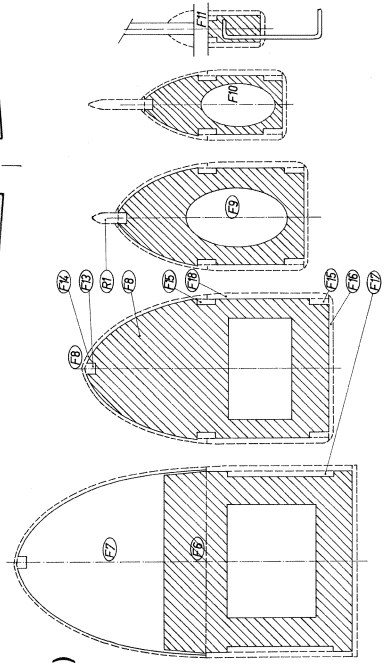
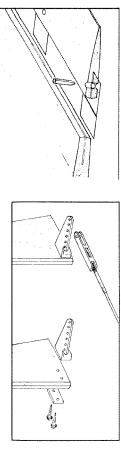
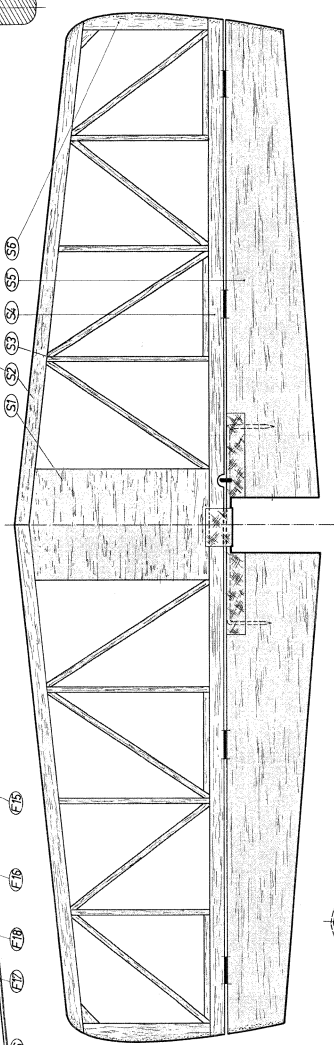


FLY-BOY

ENVERGURE 150 cm
 WINGSPAN 45,5 dm2
 SURFACE ALAIRE 45,5 dm2
 WING AREA

MOTEURS .35 - .60 (6 cc - 10 cc)
 ENGINES

Design & Drawings: Leon Janssens



ENGINES .35 to .60 cc/in

RECEIVER
 C.I.G. SERVOS

CELLS

STRAP IV6

Kaven 300cc

before outfitting
 cc, K.B. 10